



BEDOUIN PVT LTD

SEWING SOLUTIONS

Where Comfort Is Develop





BEDOUIN PVT LTD

Delivering Excellence in Quilted Solutions for Over 50 Years

Contents.





The Bedouin *Philosophy*

Bedouin is built on these core principles, upheld for over five decades:

Quality

Superior craftsmanship with a compliance rate of less than 0.4%.

Service

Reliable on-time delivery 99% of the time.

Value

Competitive pricing without compromising standards.



Group *History*

From England to Pakistan

A Story of Growth and Innovation

1971

Founded in Lancashire, England, becoming the largest commercial quilter in the UK with £3.6M in sales.

2004

Operations expanded to Pakistan, leveraging cost-efficiency while maintaining UK-quality standards.

Present

Ranked among Pakistan's Top **100 Exporters**, Bedouin serves clients in Europe, and beyond. Built on trust and commitment, we continue to deliver excellence.

Why *Bedouin*?

At Bedouin, we don't just create quilted solutions. We craft reliability, precision, and comfort tailored to your needs.

With over 50 years of expertise, industry-leading quality, and a **99% on-time delivery** rate, we are the trusted partner for businesses worldwide.

Experience the excellence, stitched into every detail.



A modern bedroom interior with a minimalist aesthetic. In the center is a low-profile bed with a dark, quilted headboard and a light-colored wooden frame. The bed is positioned on a light-colored, textured rug. On either side of the bed are matching bedside tables with a light-colored top and dark legs. The left table holds a stack of books and a small plant. The right table holds a potted plant. Above the bed, a large abstract painting with warm tones is mounted on the wall. Two small, modern wall sconces flank the painting. To the left, a window with white frames and light-colored curtains is visible. The floor is made of light-colored wood. The overall lighting is soft and ambient.

PRODUCT PORTFOLIO



A Quilted Mattress *Covers*

- Customizable designs tailored to your specifications.
- Superior durability and flawless stitching for long-lasting performance.
- Ideal for premium mattress brands.





B Soft *Goods*

1 Designed with your branding and functionality in mind.

2 High-quality wadding and stitched products for versatile applications.

3 Engineered for durability and comfort.

Embodying Bedouin means embracing timeless comfort, where every stitch tells a story of durability and trust.

Engineered for durability and comfort.





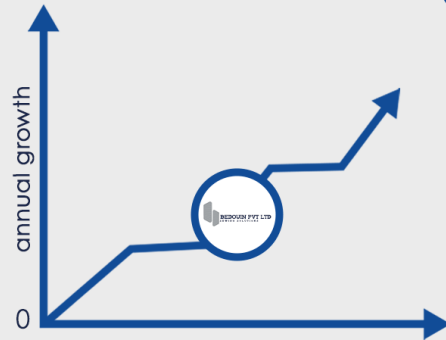
© Specialized Quilted *Products*

- Quilted components for bedding, garments, and other uses.
- Flexible material options to suit your market needs.

Seamlessly stitched, uniquely yours.

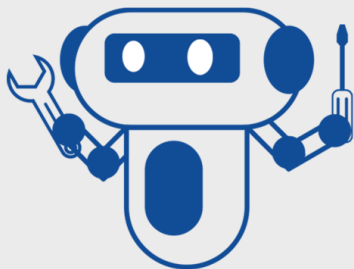


1



Our steady growth over the last decade is a testament to the confidence our customers have in our products. This continuous success shows our dedication to meeting their evolving needs.

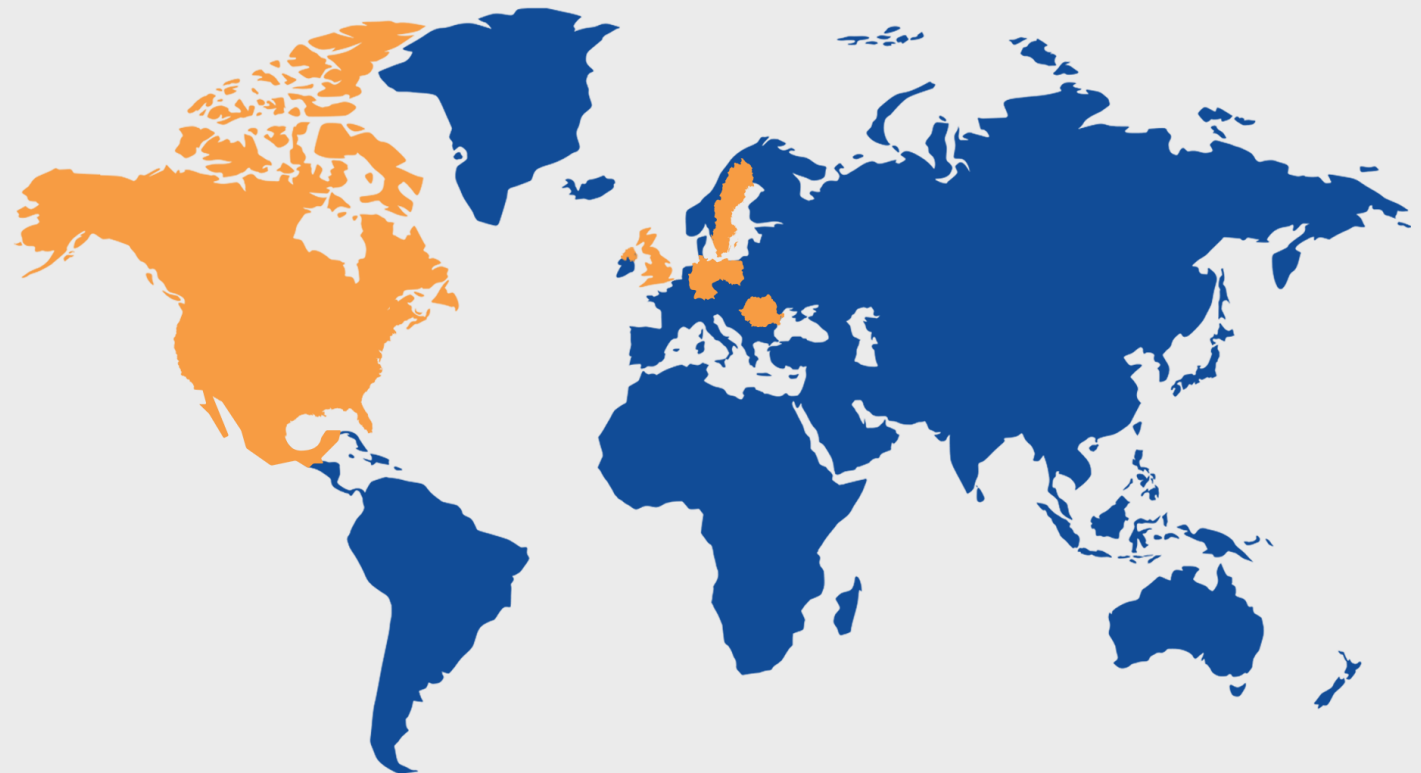
2



Half a million dollar investment in reducing carbon foot print of the factory operations is planned and phase 1 is under installation. Significant investment in cutting edge technology.

3

Expanded global client base to over 8 countries.



■ United Kingdom ■ Sweden ■ Germany ■ Poland ■ Romania ■ Mexico ■ United States of America ■ Canada



Process

How We *Work*

Streamlined and Transparent

CONSULTATION

Understanding your design requirements and objectives.

DESIGN & SAMPLING

Creating tailored designs with pre-production samples for approval.

PRODUCTION

Using vertically integrated facilities for precision and quality.

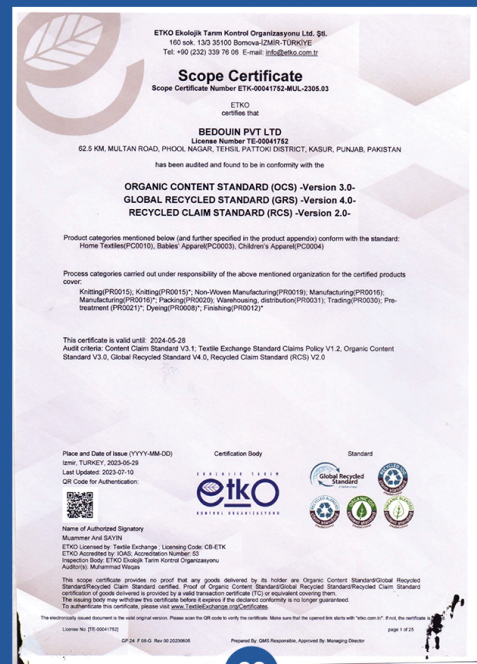
DELIVERY

Timely shipments backed by a 99% on-time delivery rate.

Certifications & Compliance



01



02



03



04



Certifications & Compliance

ACS Registrars Pakistan

CERTIFICATE OF REGISTRATION

This is to certify that:

Bedouin (Pvt.) Ltd.

of

65 – KM, Multan Road, Bhai Pheru, Lahore, Pakistan.

has been assessed and registered by ACS Registrars Pakistan (Pvt.) Ltd. against the following standard requirements:

ISO 9001:2015

The scope of registration is:

"Manufacturing and export of quilted and filled home textiles"

Certificate # 190001

Initial Assessment date: January 14th 2016 Registration date: January 28th 2019
Expiry date: January 14th 2020 Re-issue date: January 27th 2022

Authorized Signature: *[Signature]*

ACS **PNAC**

While all due care was exercised in carrying out this management system assessment, ACS Registrars Pakistan (Pvt.) Ltd. accepts responsibility only for proven gross negligence. This is not a legal document and cannot be used as such. This certificate remains the property of ACS Registrars Pakistan (Pvt.) Ltd. to whom it must be returned upon request. Certificate validity may be verified at the address below:

ACS REGISTRARS PAKISTAN (PVT.) LTD.
Suite # 17 – G, Al Hakeem View, 67 – DCT, Sir Syed Road,
Gulberg – II, Lahore, Pakistan.
E-mail: info@acsregistrars.pk Website: www.acsregistrars.pk

05

ACS Registrars Pakistan

CERTIFICATE OF REGISTRATION

This is to certify that:

Bedouin (Pvt.) Ltd.

of

65 – KM, Multan Road, Bhai Pheru, Lahore, Pakistan.

has been assessed and registered by ACS Registrars Pakistan (Pvt.) Ltd. against the following standard requirements:

ISO 14001:2015

The scope of registration is:

Manufacturing and Export of Quilted and Filled Home Textiles

Certificate # EMS 191088

Initial Assessment date: April 14th 2017 Registration date: June 6th 2017
Expiry date: June 5th 2024 Re-issue date: June 3rd 2023

Authorized Signature: *[Signature]*

ACS **PNAC**

While all due care was exercised in carrying out this management system assessment, ACS Registrars Pakistan (Pvt.) Ltd. accepts responsibility only for proven gross negligence. This is not a legal document and cannot be used as such. This certificate remains the property of ACS Registrars Pakistan (Pvt.) Ltd. to whom it must be returned upon request. Certificate validity may be verified at the address below:

ACS REGISTRARS PAKISTAN (PVT.) LTD.
Suite # 17 – G, Al Hakeem View, 67 – DCT, Sir Syed Road,
Gulberg – II, Lahore, Pakistan.
E-mail: info@acsregistrars.pk Website: www.acsregistrars.pk

06

Bedouin (Pvt.) Ltd.
Factory 62.5 KM Multan Road, Phool Nagar/ Head Office: 188-III, Gulberg-III, Lahore, Punjab, Pakistan
54010

OEKO-TEX®

Certificate
OEKO-TEX® STANDARD 100

Bedouin (Pvt.) Ltd
is granted the OEKO-TEX® STANDARD 100 certification and the right to use the trademark.

SCOPE
Quilted and non-quilted, zipped fixed and removable mattress covers, pillow covers and quilts made of woven polyester (cotton in white and dyed), knitted polyester / cotton, polyester/elastane and polyester/viscose in white and yarn dyed, white 100% polyester knitted fabric, finished with biological active products accepted by OEKO-TEX® and back coated with PUR, woven polyester/polypropylene yarn dyed fabric, partly finished with flame retardant; White and dyed polyester knitted and woven fabric; White Knitted Polyester/lyocell fabric; White and dope dyed 100% polyester 3D mesh fabric; Tri-dimensional knitted fabric (ind. 3D mesh fabric) made of white or dope-dyed polyester knitted fabric as shell fabric, white or black polyester fiber as interlining; white or dope-dyed polyester yarn knitted fabric as backing fabric in a limited range of 3 colours and finished, white woven fabric made of polyester/polypropylene with sizing; Eco knitted recycled polyester/polyester fabric finish with thermoregulation management (recycled ... (Please scan QR code for full scope)

PRODUCT CLASS
1) Baby articles – Annex 6
Further compliance information (REACH, SVHC, POP, ODS, etc.) can be found on info.oeko-tex.com/en/faq
The certificate is based on the test methods and requirements of the OEKO-TEX® STANDARD 100 that were in force at the time of evaluation.

Supporting Documents
✓ Test report: 72752
✓ Declaration of conformity in accordance with EN ISO 17050-1 as required by OEKO-TEX®
✓ OEKO-TEX® Terms of Use (ToU)

Agustina Oliver
Agustina Oliver
Senior Technical Officer

Manchester, 2024-06-11

07

Shirley
Substances of Very High Concern (SVHC)

Assessment Certificate

REACH

Company Name
Bedouin (Pvt.) Ltd
Factory 62.5 KM Multan Road, Phool Nagar/ Head Office: 188-III, Gulberg-III, Lahore, Punjab, Pakistan
54010

Article Description
Woven and knitted quilted and non-quilted, zipped, fixed and removable mattress covers, pillow covers and quilts made of woven PES/CO in white and dyed, knitted PES/CO, PES/EL and PES/CV in white and yarn dyed; white 100% PES knitted fabric, finished with biological active products and back coated with PUR; woven PES/PP yarn dyed fabric, finished with flame retardant products; white and dyed 100% PES (knitted/woven); White knitted PES/CV fabrics and dope dyed 100% PES 3D mesh in colour blue and grey; PES/PP woven and knitted fabric in yarn dyed, laminated with white non-woven; PES/PP woven fabric with sizing in colour white; white and dope dyed 100% PP non-woven fabric; raw white and pigment dyed PU foam (tested height 30 cm). Including accessories: sewing threads, woven and printed labels, PES filling material (incl. recycled PES from PET bottles, <20% in final product), zippers, PES cords, binding tapes (white and dyed), woven webbing and elastic made of 100% PA and mixtures with rubber, white and yarn dyed woven webbings in 100% PES and 100% CO.

This article/product has been assessed for SVHC compliance based on information provided by the customer. This certificate applies only to those articles as described in report 571/72441. The articles in question comply with the requirements of the current SVHC list issued on 23.03.2024, in that they do not contain SVHC at levels greater than 0.1%w/w. Any subsequent variation in the production of this article/product (this includes changes in raw materials, chemical usage or processing), invalidates this assessment/certification. This certificate is also invalidated as soon as the next version of the SVHC list comes into force.

Report Number: 72441
Certificate Number: REACH 38030
Date of Issue: 02 May 2024

Authorized by
[Signature]
Dr. Racha Eldeisy
Senior Technical Officer

Note: The validity of this certificate can be confirmed by contacting the issuing Office:
Shirley, Unit 11 Clarence Avenue, Trafford Park, Manchester, M17 2DS, United Kingdom
Tel: +44 (0)161 889 1610 email: reach@shirley.co.uk website: www.shirley.co.uk

08



Certifications & *Compliance*





Global Reach & Exhibitions

Connecting with the World

We've built strong relationships with clients worldwide through regular participation in international exhibitions:

- **Interzum, Germany**
- **ISPA, USA**



Contact Us

Let's Work Together